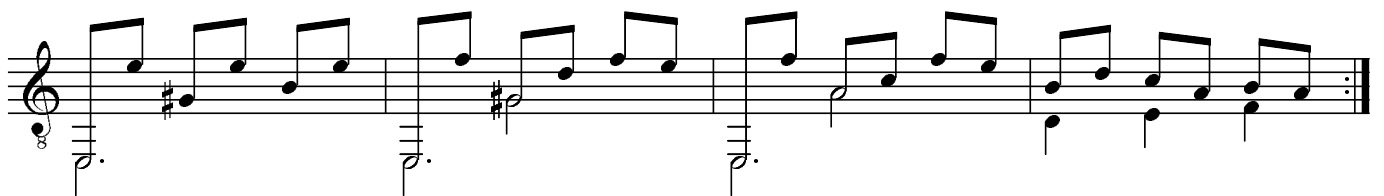
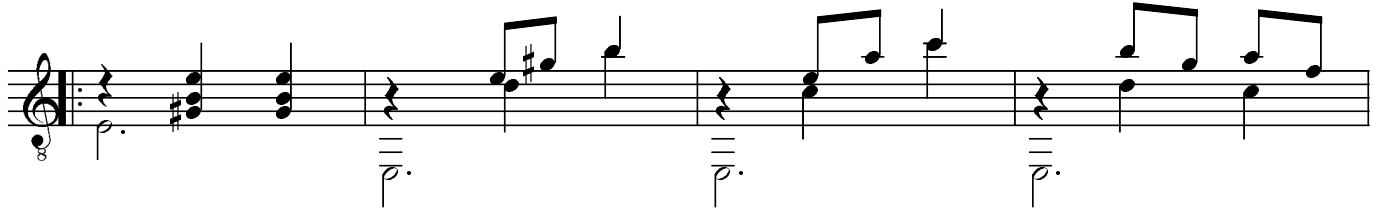
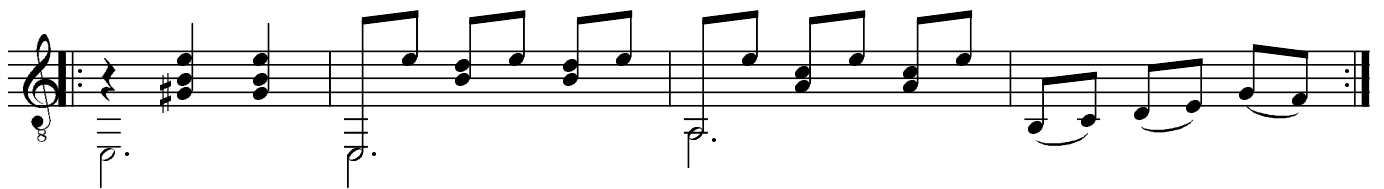
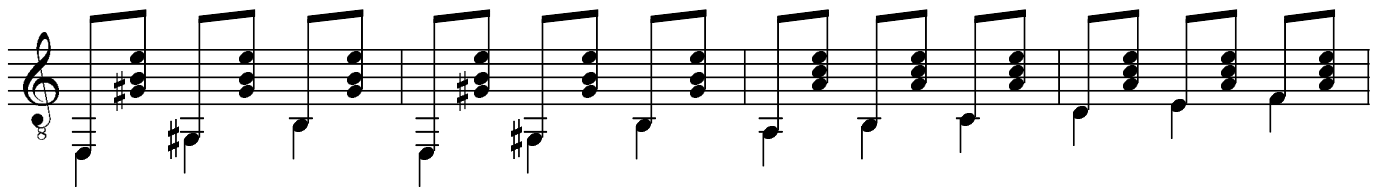
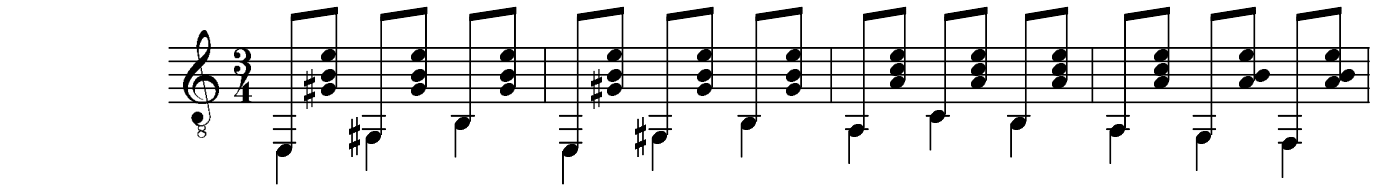


MALAGUEÑA

F. Tarrega



Copla



The image displays a page of musical notation for guitar, consisting of ten staves. The notation is written in a treble clef with a 6/8 time signature. The music features a variety of rhythmic patterns, including eighth and sixteenth notes, often grouped into triplets (indicated by a '3' above the notes). Chords are represented by vertical lines with dots below them, some accompanied by a 'p.' (piano) dynamic marking. The piece concludes with a double bar line and a final chord.