

Nº IV. GAVOTA-CHÔRO

H. VILLA-LOBOS
(Rio, 1912)

Pour Guitare

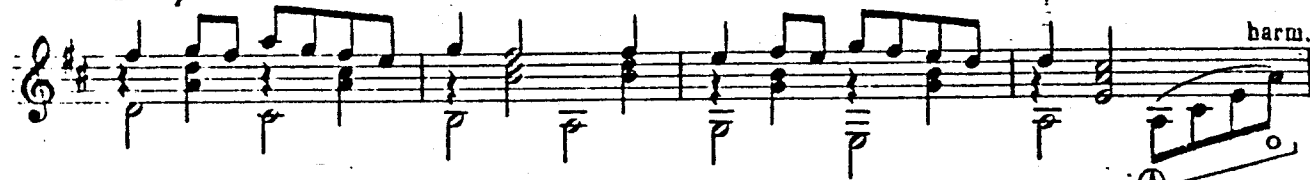
Alegreto moderato



a tempo



a tempo



harm.



a tempo
rall.

p

rall.

a tempo
mf

rit.

a tempo

rall.

a tempo

First musical staff with treble clef, key signature of two sharps (F# and C#), and a 3/4 time signature. It contains a series of eighth and sixteenth notes with chords. A circled '2' is at the end of the staff.

Second musical staff, continuing the melody and accompaniment from the first staff.

Third musical staff, continuing the piece.

Fourth musical staff. It includes the instruction *rall.* (rallentando) and *a tempo* (return to original tempo).

Fifth musical staff. It includes the instruction *rall.* and *a tempo*.

Sixth musical staff.

Seventh musical staff. It features circled letters 'B' and 'A' at the end of the staff.

Eighth musical staff. It includes the instruction *rall.* and the word *harm.* (harmonic) written above the notes.

effet:

A small musical staff showing a specific effect, possibly a tremolo or a specific rhythmic pattern.

a tempo

mf

rit.

a tempo

rall.

a tempo

harm.

rall.