

ВАРИАЦИИ

на тему американской народной песни

„ Дорога на Колорадо “

Д. ДЮАРТ

Molto espressivo [Очень выразительно] $\text{♩} = 40$

①-ре

mf

Фл. 7
Фл. 12

Вар. 1 **Vivo** [Живо] $\text{♩} = 40$

legato
sf

molto rall. più maestoso

First musical staff with treble clef, key signature of two sharps (F# and C#), and a common time signature. It features a melody with various note values and rests, accompanied by a bass line. A dynamic marking of *sf* is present at the beginning.

Second musical staff, continuing the piece with similar melodic and harmonic structures.

accel.

Third musical staff, showing a change in tempo with the marking *accel.*

a tempo

rall.

Fourth musical staff, featuring a return to the original tempo with a *rall.* marking. A dynamic marking of *sf* is placed below the staff.

rall.

фл. 12

фл. 7

dim.

Fifth musical staff, concluding the section with a *rall.* marking and a *dim.* instruction. Flute parts are indicated by 'фл. 12' and 'фл. 7'.

Вар. 2 *Lirico e cantabile* [Лирично, певуче] $\text{♩} = 58$

Sixth musical staff, starting a new section with a dynamic marking of *mf*.

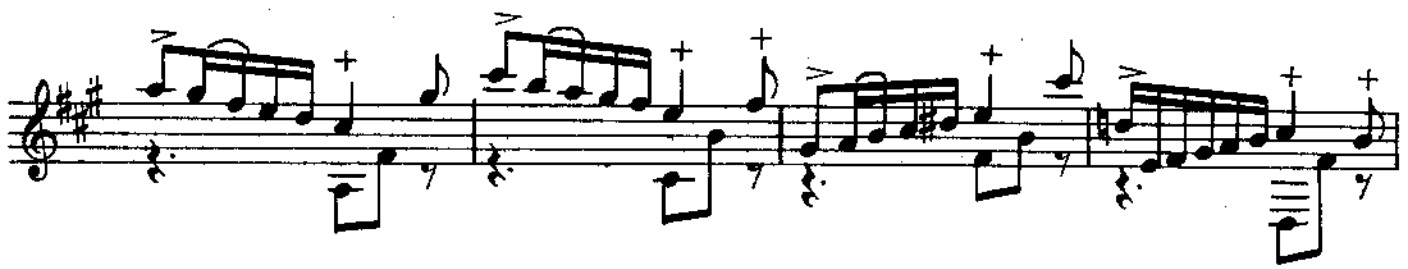
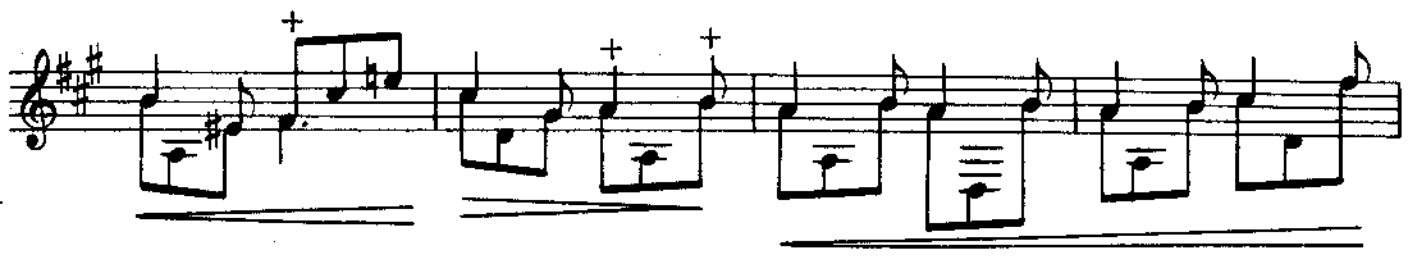
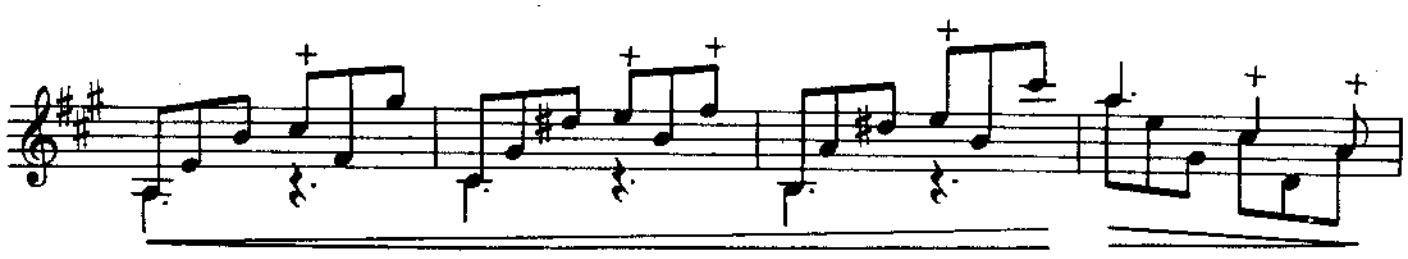
a piacere

tempo giusto

molto rall.

Вар. 3 *Con moto* [С движением] $\text{♩} = 45$

legato
mf



Bap. 4

First musical staff with treble clef, key signature of one sharp (F#), and 3/4 time signature. It features a melodic line with eighth and sixteenth notes and a bass line with chords. Dynamics include *p* and *cresc.*

Second musical staff with treble clef, key signature of one sharp, and 3/4 time signature. It features a melodic line with eighth and sixteenth notes and a bass line with chords. Dynamics include *p* and *mf*.

Third musical staff with treble clef, key signature of one sharp, and 3/4 time signature. It features a melodic line with eighth and sixteenth notes and a bass line with chords. Dynamics include *p*.

Fourth musical staff with treble clef, key signature of one sharp, and 3/4 time signature. It features a melodic line with eighth and sixteenth notes and a bass line with chords. Dynamics include *mf* and *cresc.*

Fifth musical staff with treble clef, key signature of one sharp, and 3/4 time signature. It features a melodic line with eighth and sixteenth notes and a bass line with chords. Dynamics include *f*.

Sixth musical staff with treble clef, key signature of one sharp, and 3/4 time signature. It features a melodic line with eighth and sixteenth notes and a bass line with chords. Dynamics include *dim.* and *ff*. The number 12 is written at the end of the staff.

fl. 7

f *p*

Вар. 5 **Scherzando** [Шутливо] $\text{♩} = 40$

mp legato

p

f

p

rit. poco a tempo

mp *p* *p*

f *p*

Var. 6 Ritmico ma delicatamente [Ритмічно, делікатно] ♩ = 66

mp

Musical staff with treble clef, key signature of one sharp (F#), and a melody with eighth and sixteenth notes. The bass line consists of chords with stems pointing downwards.

Musical staff with treble clef, key signature of one sharp (F#), and a melody with eighth and sixteenth notes. The bass line consists of chords with stems pointing downwards. Dynamics markings *pp* and *mp* are present.

rit. poco Вар. 7 Финал

rit. poco Вар. 7 Финал

$\text{♩} = 60$

p

Musical staff with treble clef, key signature of one sharp (F#), and a melody with eighth and sixteenth notes. The bass line consists of chords with stems pointing downwards. A *cresc.* marking is present.

Musical staff with treble clef, key signature of one sharp (F#), and a melody with eighth and sixteenth notes. The bass line consists of chords with stems pointing downwards. Dynamics markings *ff* and *фл. 12* are present.

фл. 12 **Con moto** фл. 12

фл. 12 **Con moto** фл. 12

f *mp* *f*

First musical staff, treble clef, key signature of two sharps (F# and C#). It features a complex texture with multiple voices and a dynamic marking of *v* (vibrato) above the staff.

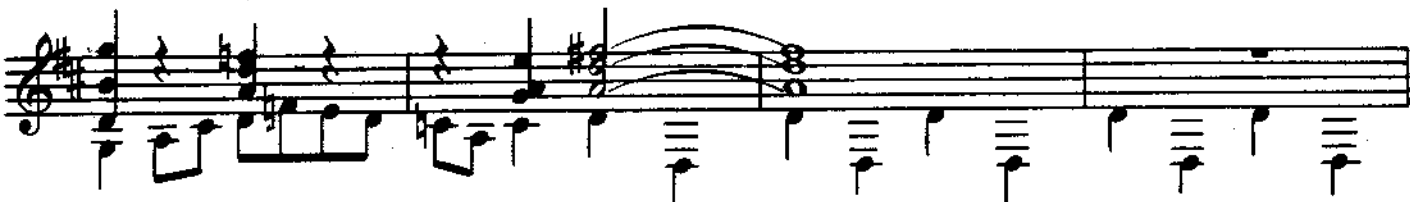
Second musical staff, treble clef, key signature of two sharps. Continues the complex texture from the first staff.

Third musical staff, treble clef, key signature of two sharps. Includes a dynamic marking of *mf* (mezzo-forte) below the staff.

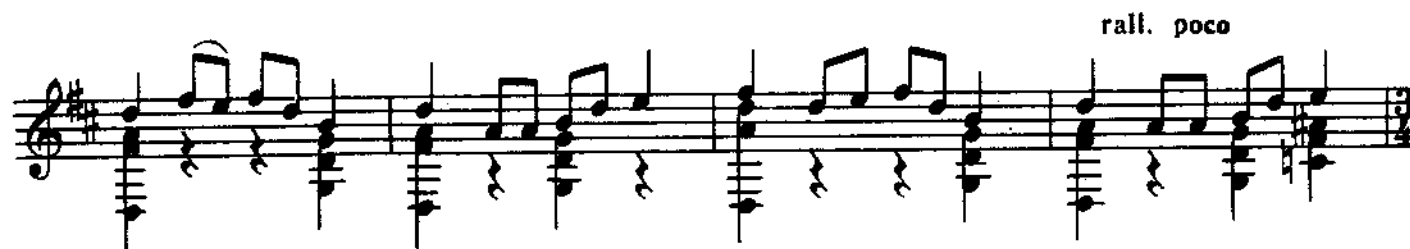
Fourth musical staff, treble clef, key signature of two sharps. Includes a dynamic marking of *p* (piano) below the staff.

Fifth musical staff, treble clef, key signature of two sharps. Includes a dynamic marking of *ff* (fortissimo) below the staff, followed by the instruction *basso ben marcato*.

Sixth musical staff, treble clef, key signature of two sharps. Continues the *ff* *basso ben marcato* section.



Tranquillo ma con moto



Lo stesso tempo, ma meno mosso e tranquillo [В том же темпе, но спокойнее]



affrettando

Tempo primo [Первый темп]

фл. 12 *Con moto* фл. 12

фл. 12 *f* фл. 7 *ff*

фл. 12 *mf* *mp* *f*

p

фл. 7 фл. 12 фл. 7 фл. 12 фл. 7 фл. 12 фл. 7 фл. 12

фл. 7' *mp*

mf *p*

dim. *rall. molto*

mp *p dolce*

allarg. *d=52* *ff*

rit. poco a tempo

più mosso *mf*

φ n. *rall.* *ff*