

AIRES DE LINARES

PACO DE LUCIA

Molto tranquillo

The first staff of music begins with a treble clef and a key signature of one flat (B-flat). The tempo is marked 'Molto tranquillo'. The notation includes a series of chords and melodic lines, with a '6' above the final measure of the first system. Fingering numbers (0, 2, 4) are indicated below the notes.

The second staff continues the musical piece, featuring a series of chords and melodic lines. Fingering numbers (0, 3, 4, 0) are indicated below the notes.

The third staff continues the musical piece, featuring a series of chords and melodic lines. Fingering numbers (2, 1, 2, 4, 2, 4, 8, 2) are indicated below the notes.

The fourth staff continues the musical piece, featuring a series of chords and melodic lines. Fingering numbers (1, 4, 2, 4, 3, 2, 7) are indicated below the notes.

The fifth staff continues the musical piece, featuring a series of chords and melodic lines. Fingering numbers (0, 4, 1, 8, 2) are indicated below the notes.

The sixth staff continues the musical piece, featuring a series of chords and melodic lines. Fingering numbers (3, 1, 0, 4, 0, 8, 4, 1, 2, 4) are indicated below the notes.

The seventh staff continues the musical piece, featuring a series of chords and melodic lines.

1 2 3

3 0 1 4 0 1

0 2 0 4 0

4 0 4 2

1 5

3 4 2

2 3 0 4 1 2 3 4

4 2

2 4

2

3 2 4 2

3 2 1

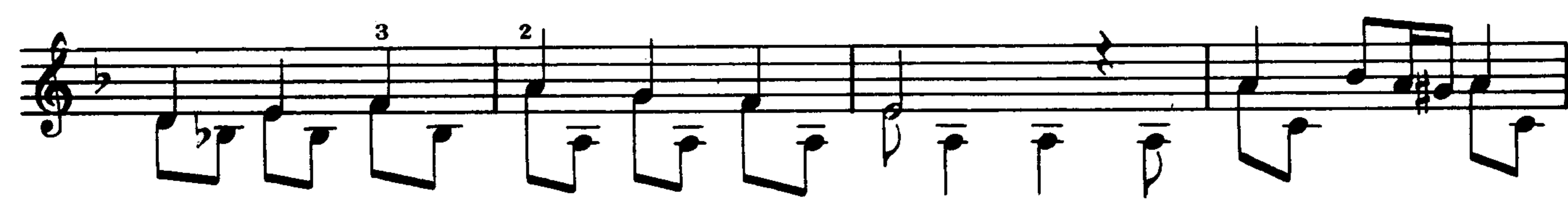
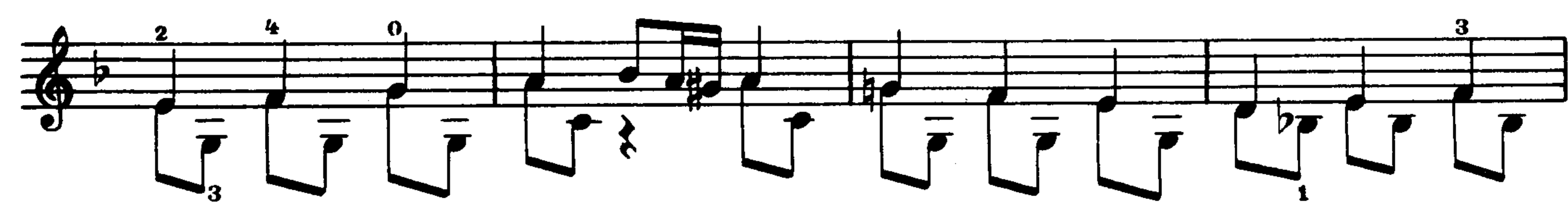
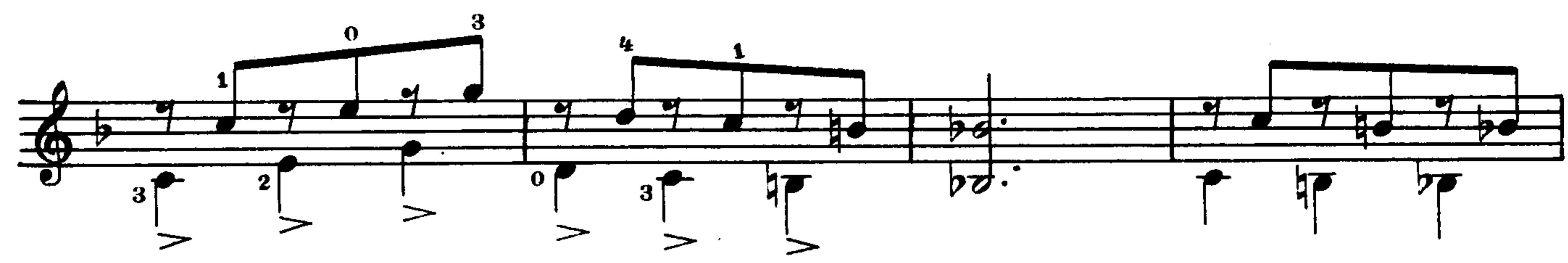
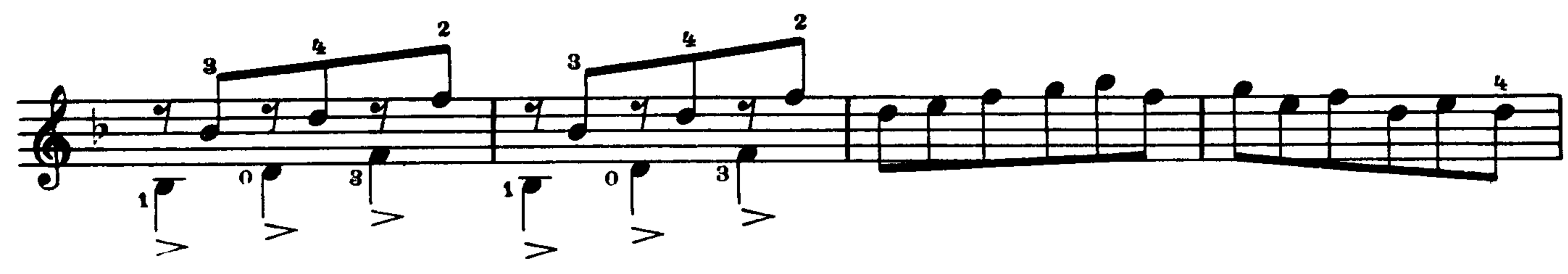
3

2 3

5

2

3



This page of musical notation consists of eight staves of music. The first seven staves contain melodic lines with various rhythmic patterns, including eighth and sixteenth notes, and some triplets. Fingerings are indicated by numbers 1, 2, and 3. Vibrato marks (v) are placed under several notes. The eighth staff features a double bar line followed by a 'C.V.' (Coda) symbol and a final chord. The key signature is one flat, and the time signature is not explicitly shown but appears to be 4/4 based on the phrasing.