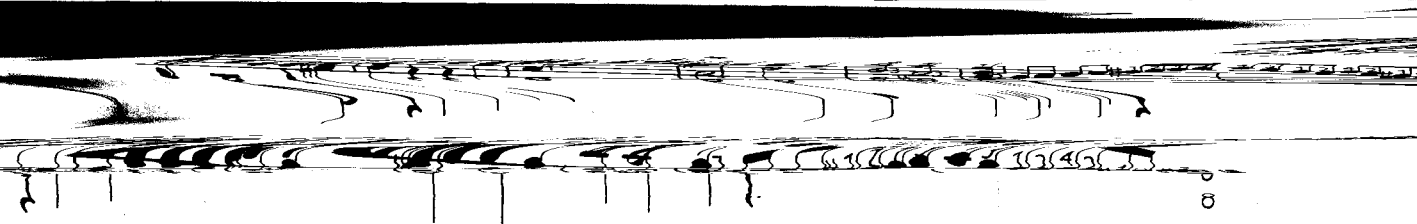
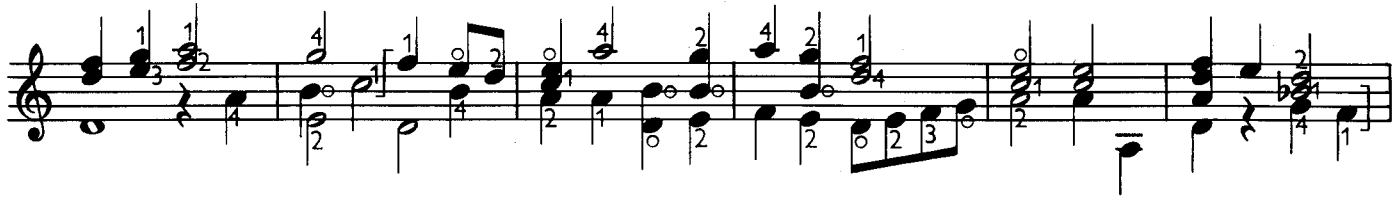


2. Canzone di Florentio Maschera



First musical staff, featuring a treble clef and a key signature of one sharp (F#). The staff contains a sequence of chords and melodic lines, including a prominent eighth-note melody in the upper voice.

Second musical staff, starting with a repeat sign and a 4/2 time signature. It includes a bass line with a 0 (open string) and various fingerings (1, 2, 3, 4) indicated above the notes.

Third musical staff, continuing the piece with a treble clef and a key signature of one sharp. It features a complex rhythmic pattern with many eighth notes and various fingerings (1, 2, 3, 4) and a circled 4.

Fourth musical staff, showing a treble clef and a key signature of one sharp. It includes a melodic line with a 4/4 time signature and a final flourish with a double bar line and repeat dots.

Fifth musical staff, featuring a treble clef and a key signature of one sharp. It contains a series of chords and a bass line with a 2 (open second string) and various fingerings.

Sixth musical staff, with a treble clef and a key signature of one sharp. It includes a melodic line with a 4/4 time signature and a final flourish with a double bar line and repeat dots.

Seventh musical staff, featuring a treble clef and a key signature of one sharp. It contains a complex rhythmic pattern with many eighth notes and various fingerings (1, 2, 3, 4) and a circled 2.