

CAPRICCIO XVII

N. PAGANINI, TRAN. V. OSINSKY

Capric. III

First musical staff, treble clef, 4/4 time signature. It begins with a whole note chord, followed by a series of eighth notes and sixteenth notes, ending with a trill-like flourish.

Second musical staff, treble clef. It starts with a trill (tr) and a triplet of eighth notes. The staff contains several measures of sixteenth-note runs with fingerings (1, 2, 3, 4) and circled numbers (1, 2, 3) indicating specific techniques or phrasing.

Third musical staff, treble clef. It features a series of sixteenth-note runs with fingerings (0, 1, 2, 3, 4) and circled numbers (1, 2, 3) indicating techniques.

Fourth musical staff, treble clef. It continues the sixteenth-note runs with various fingerings and articulations.

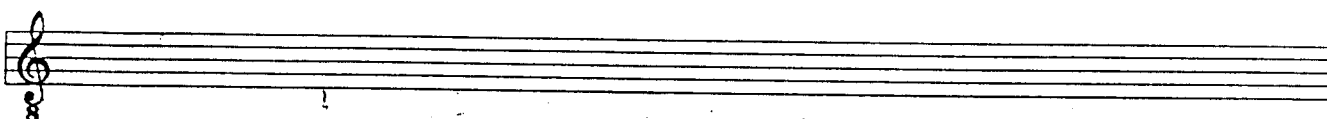
Fifth musical staff, treble clef. It shows a continuation of the sixteenth-note runs with complex fingering patterns.

Sixth musical staff, treble clef. It features a series of sixteenth-note runs with fingerings (1, 2, 3, 4).

Seventh musical staff, treble clef. It continues the sixteenth-note runs with fingerings (1, 2, 3, 4).

Eighth musical staff, treble clef. It features a series of sixteenth-note runs with fingerings (1, 2, 3, 4).

Ninth musical staff, treble clef. It concludes the piece with a series of sixteenth-note runs and a final chord.



VARIANTE

