

34 JIGG

The musical score for "34 JIGG" is presented in two systems. Each system consists of a treble clef staff and a bass clef staff. The music is written in a key with one sharp (F#) and a 4/4 time signature. The first system includes a repeat sign with first and second endings. The second system contains numerous fingerings (1-4) and articulation marks such as accents and slurs. The piece concludes with a final cadence in the bass staff.

35 JIGG*)

The musical score for "35 JIGG*)" is presented in a single system with a treble clef staff and a bass clef staff. The music is in a key with one sharp (F#) and a 4/4 time signature. It features a variety of rhythmic patterns, including eighth and sixteenth notes, and includes fingerings (1-4) and articulation marks like accents and slurs. The piece ends with a final cadence in the bass staff.



*) Gyakorlatilag bármely hangnemben játszható. (Pl. d-mollban ⑥ = D egy oktávval feljebb is, lejjebb is szépen szól; a darab esetleges kétszeri eljátszásánál érdemes ezzel a „regiszterváltással” élni.

It can be played, in effect, in any key (e.g. in D minor ⑥ = D it sounds well one octave higher or lower as well; if the piece is performed twice it is worth using this "registration".)

Das Stück kann praktisch in allen beliebigen Tonarten vorgetragen werden (z.B. in d-Moll ⑥ = D klingt es auch um eine Oktave höher oder tiefer schön, sollte das Stück eventuell zweimal gespielt werden; es lohnt sich diese „Registrierung“ zu verwenden).

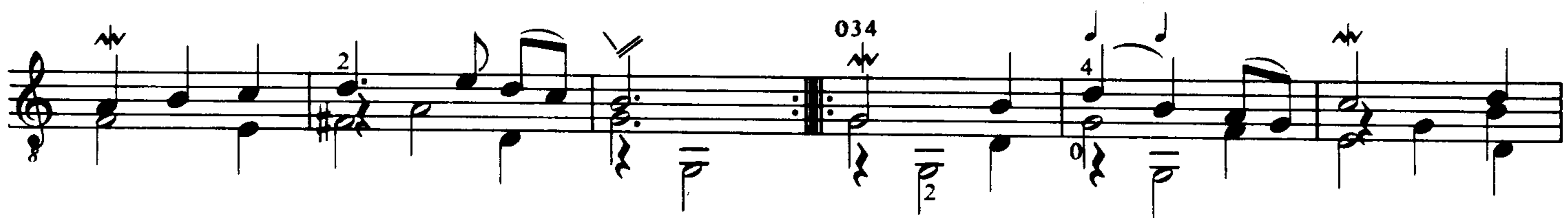
36 SONG TUNE

⑥ = D'



37 SONG TUNE *)

Ossia: ⑥ = D



*) D-dúrban és A-dúrban is játszható.

To be played in D major and A major as well.

Kann auch in D-Dur und A-Dur gespielt werden.